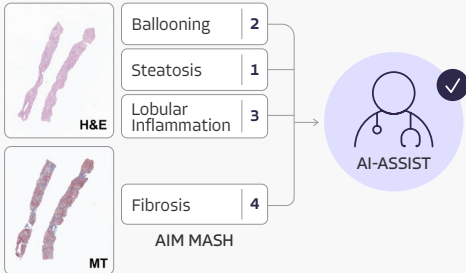


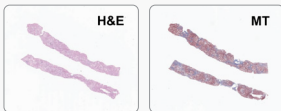
AIM MASH AI Assist ^{*1}



Reduce impact of reader variability and capture drug effect in clinical trials

**under review by EMA/FDA*

MASH biopsy WSI



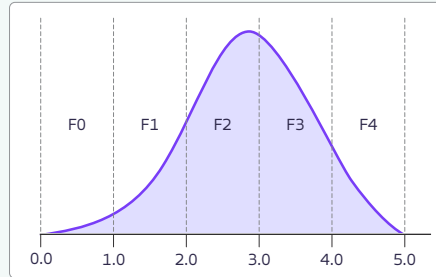
AI-Assist Report:

- Pathologist AI-Assisted ordinal MASH CRN scores
- AI-alone ordinal MASH CRN scores

H&E Report			
	AIM-MASH	Pathologist	Final
Steatosis	2	2 ✓	2
Ballooning	1	2 ✓	1
Lob. Inflam.	1	3 ✗	3

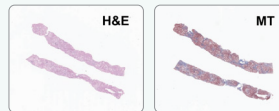
MT Report			
	AIM-MASH	Pathologist	Final
Fibrosis	4	4 ✓	4

AIM MASH+ ¹



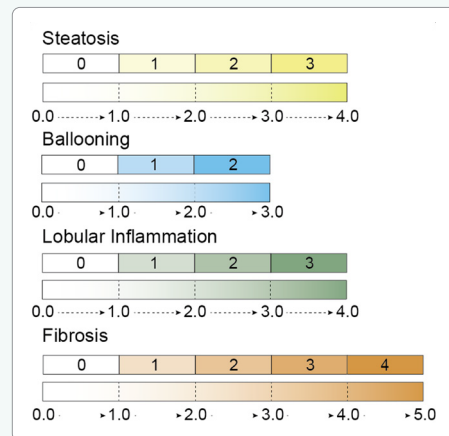
Nuanced and deeper understanding of changes within CRN grades/stages

MASH biopsy WSI

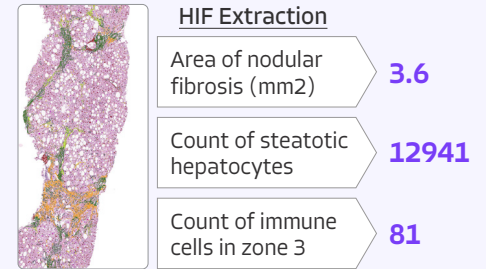


Feature Reports:

- AI-alone ordinal MASH CRN scores
- AI-derived continuous MASH CRN scores
- Artifact model QC features



LiverExplore ¹



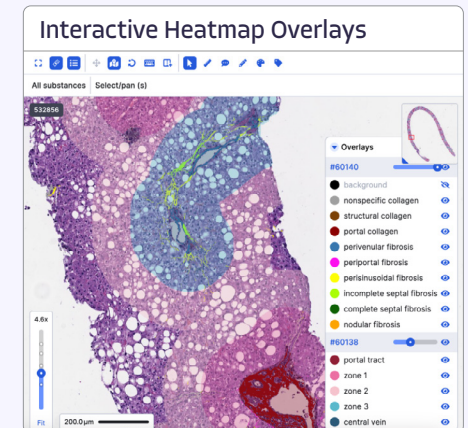
Quantitative description of liver microarchitecture to uncover insights into drug MOA and beyond

Liver biopsy WSI (40X)



Feature Reports:

- >1000 quantitative features: tissue, cell (including nuclear features), lobular zones, & fibrosis subtypes
- Artifact model QC features



Central Pathology Services for Clinical Trials

10

Biopharma sponsors trusting PathAI as their central pathology lab

>25,000

of slides read through our central lab to date

2-7

Avg day TAT from sample receipt to site report

Zero

Critical findings across all audits to date (8+)