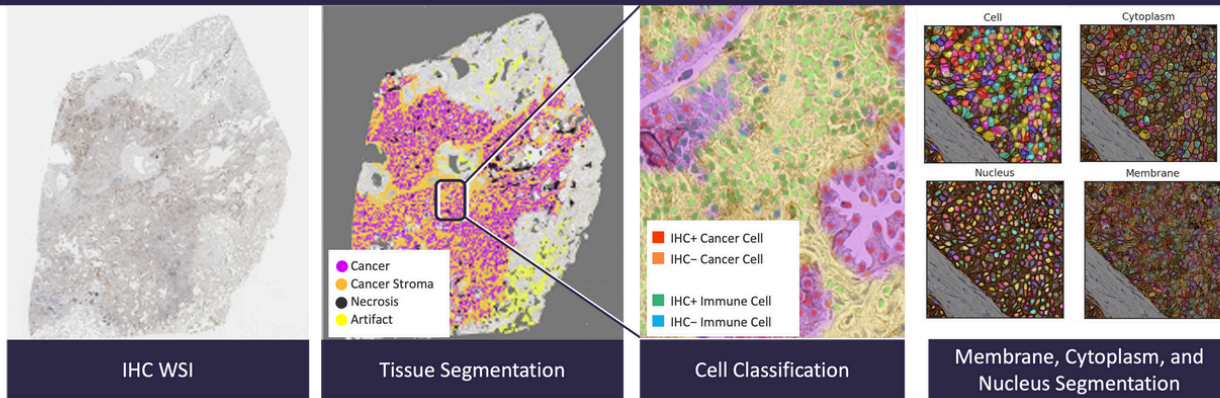


# Introducing IHC Explore™

## Enhanced biomarker quantification from immunohistochemistry (IHC) slides

AI-Powered characterization and quantification of tissue regions, cell populations, stain intensities, and scoring compartments

IHC Explore is an AI-powered panel that extracts **human interpretable features (HIFs)** from IHC WSI to characterize staining patterns with spatially-contextualized, single-cell resolution



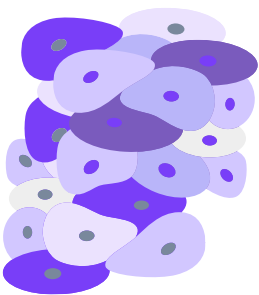
## Unlock next-generation IHC biomarkers and target insights

IHC Explore provides >300 standardized & structured features that allow you to:

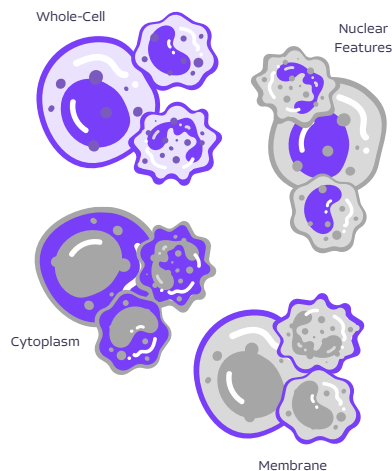
- **Segment and classify** tissue regions and cell types across the entire whole slide image
- **Analyze** densities, spatial patterns, and cell-cell interactions with single-cell resolution
- **Quantify** stain intensity by tissue region, cell type, and subcellular compartment
- **Characterize** expression heterogeneity, target localization, and stain distribution

### Continuous H-Score

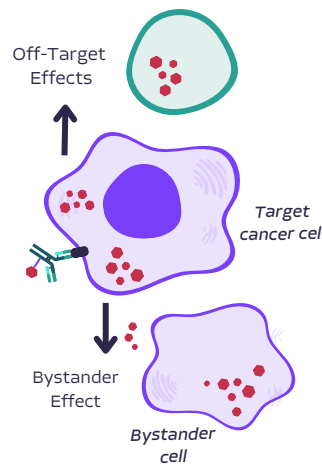
Quantitative, single-cell intensity



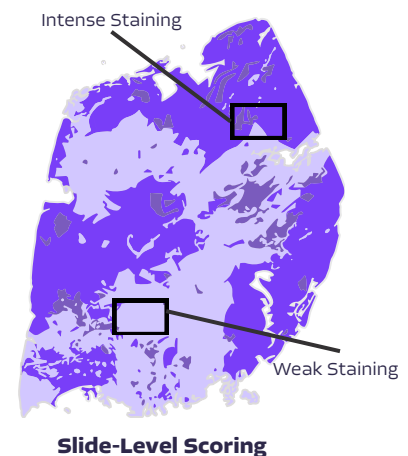
### Sub-Cellular Stain Quantification



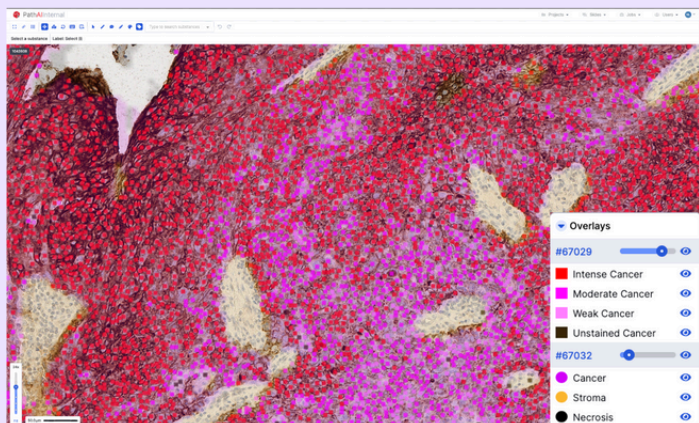
### Immunogenicity Assessment



### Expression Heterogeneity



# Manage, visualize and interact with whole slide images, AI-powered overlays, and quantitative feature tables



Visualization on AISight®

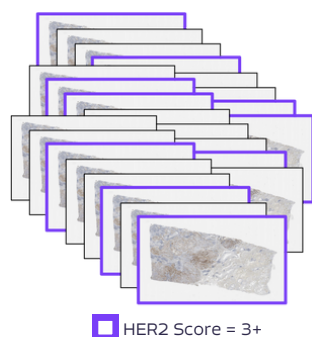
CASE ID	AREA of CANCER TISSUE	NUMBER OF INTENSELY STAINED CANCER CELLS -	DENSITY OF CANCER CELLS IN TUMOR
257785	27.355	3611	12.503
257682	32.699	18822	7.405
257722	17.855	2974	5.396
257812	24.049	3426	8.131
257664	37.703	2281	2.764
257779	86.544	13325	9.771
257842	74.902	5367	6.268
257710	36.668	22139	8.405
257772	23.048	15403	7.670
257661	40.650	232	1.819
257675	38.911	31577	3.195
257768	55.950	46167	3.642
257655	33.196	1910	5.435
257715	41.967	5108	3.573
2578.47	27.514	5828	2.817
257787	50.229	3137	4.632
257717	56.574	16558	5.702
257810	45.417	52186	6.137
257831	80.421	8834	1.372
257777	98.076	78762	4.212
257728	12.002	82914	2.063

Downloadable Feature Tables

## In Focus - Quantifying HER2 Expression Heterogeneity

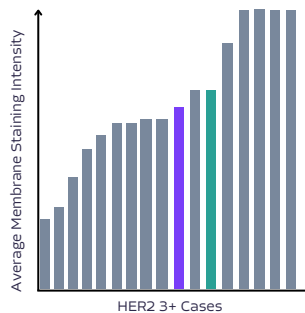
IHC Explore's spatial, single-cell insights capture target expression distribution & stain heterogeneity to unlock novel biomarker strategies

### Slide-Level Scores



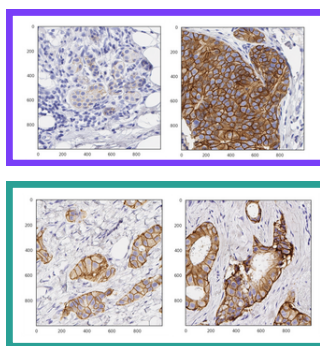
HER2 IHC is classically scored categorically based on cancer cell stain completeness & intensity

### AI-Enabled Scores



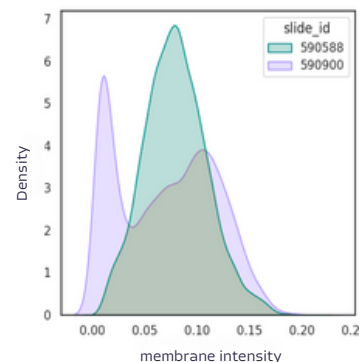
IHC Explore provides **quantitative, continuous measures** of cell populations and staining intensity

### Spatial Insights



IHC Explore quantifies **expression heterogeneity** not captured by categorical scores

### Single-Cell Insights



IHC Explore **per-cell features** unveil distinct sub-populations that drive novel biomarker insights

Learn more at [www.pathai.com](http://www.pathai.com)

Contact us at [bd@pathai.com](mailto:bd@pathai.com)

IHC Explore™ and AISight® are for research use only. Not for use in diagnostic procedures.

© 2024 PathAI, Inc. | PathAI and its logo are registered trademarks of PathAI. All rights reserved.

[www.pathai.com](http://www.pathai.com)  
1325 Boylston Street Suite 10000 Boston, MA 02215